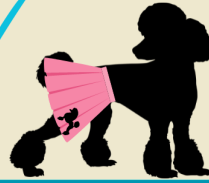


SCRUFFY CITY STRONG DOGS PRESENTS

Pull, Twist, & Shout!

October 22, 2023 | W3PO - 2 Pulls Wheels
Oak Ridge, Tennessee (Indoors)



DATES & LOCATION

Sunday, October 22, 2023

8:30 am - Weigh In / 9:30 am - Start

9023 Oak Ridge Hwy, Knoxville, TN 37931

Indoors, Wheels on Carpet

ENTRY

Entry Fees are to be \$20 per dog, per pull.

A \$5/pull discount will be made for Junior Handlers.

A \$1 dollar convenience fee will be added to entries paid online.

Entries will be accepted DAY OF until the start of each Handlers Meeting. All participants must sign their entry form DAY OF. RSVPs will be accepted online.

RSVPs can be submitted at [scruffycitystrongdogs.com](https://forms.gle/M3og5Z49NkLe62rc8) or the link below:

<https://forms.gle/M3og5Z49NkLe62rc8>

Entry Fees can be paid via cash, check, Paypal, or Zelle anytime before the start of the competition. Checks must be made out to Scruffy City Strong Dogs. Checks will be deposited within one week following the conclusion on the event. A \$30 fee will be assessed for any returned checks. No refunds will be given past the closing date for any reason.

OFFICERS AND OFFICIALS

Scruffy City Strong Dogs

scruffycitystrongdogs.com

scruffycitystrongdogs@gmail.com

SCSD Officers

President: Ami Insley

Vice President: Brianna Stock

Treasurer: Rebecca Pierce

Secretary: Reagan Hart

Trial Officials

Chief Judge: Ami Insley

Back-Judge: Reagan Hart

Apprenticing Judge: Brianna Stock

Trial Secretary: Reagan Hart

865.414.5461

ihartdoggos@gmail.com

PULL, TWIST, & SHOUT!

ELIGIBILITY

- All breeds and mixes are eligible.
- Dogs must be between 10 months and 12 years old (dogs over 12 years old may compete with the WRITTEN approval of a vet).
- No pregnant, nursing, or bitches in season.
- Dogs must be free of disease and injury.
- Dogs cannot be on any performance enhancing drugs.

CLASSES OFFERED

Novice - Any dog 10 months older on the day of the event. Recommended for new teams.

Open - Any dog 1 year or older on the day of the event. Recommended for experienced teams.

Novice and Open Dogs will compete together, results will be reported separately.

WEIGH IN

All dogs must be weighed in by a judge in order to compete! A dog competing in both events only needs to be weighed once. Dogs must be weighed in their natural form, wearing only a flat or martingale collar (up to 3in in width). Leashes can be attached.

Weigh In will be offered at the following time:

Sunday, October 22, 2023 - 8:30 am to 9:15 am

*Teams who are competing in the afternoon pull only can weigh in 15 minutes prior to the afternoon handlers meeting.

HANDLER'S MEETING

All handlers must attend the Handler's Meeting prior to their dog competing. Handler's Meetings will start promptly 15 minutes before the scheduled start time of each competitions. Handlers will be asked to sign in at each meeting.

Handler's Meetings will last approximately 15 minutes. There will be time for questions.

WEATHER

For indoor events, weather will be monitored for the safety of traveling teams.

PULL, TWIST, & SHOUT!

ALL EXPERIENCE LEVELS WELCOME

Scruffy City Strong Dogs encourages all interested in learning about this awesome sport to come out and try it! We love our Novice Teams and want everyone to be successful.

WEIGHT PULL BASICS

- Simply put, in weight pull a dog must pull a cart 16 feet in under 60 seconds.
- Dogs must participate in a properly fitted weight pull harness. Judges may inspect harnesses at any time.
- Weight Pull competitions are structured in Rounds.
 - Rounds are defined by an increasing weight increment. The weight increment is called the “Drop”.
 - Round 1 will be the empty cart.
- Each dog will have the opportunity to PULL or PASS in each round.
 - Dogs that successfully pull the entire distance in the allotted time will move on to the next round.
 - Handlers may PASS up to three rounds in a row after their dog has begun pulling. (Example: Dog completes Round 1 easily and quickly, handler may PASS Rounds 2, 3, & 4. Dog would pull again in Round 5.)
- Rounds continue until the handler chooses to withdraw their dog or the dog earns two fouls.
- Fouls are called by the Judge at the time they are observed. Only Judges can call a Foul. Fouls are assessed for:
 - Not pulling the cart the entire distance in allotted time.
 - Handler touching the dog OR equipment after the timer has started.
 - Dogs become tangled in equipment/harness in a way that interferes with the safety of the dog while pulling. (Judges will call this “Tangle”).
 - Excessive foul language in the chute.
 - Dropping or pushing the dog.
 - A sling-shot or walking start.
 - Elimination by the dog in the chute.
 - Baiting (in any form).
 - Double handling.
 - Being in the “No Pull Zone” for more than three seconds. This area is between the front of the car and the base of the dog’s tail.
- The following Fouls are grounds for Disqualification
 - Food on the handler in the chute.
 - Aggressive/harsh action directed to the dog. This includes physical corrections of all kinds.
 - If a handler is DQ’d for aggressive/harsh actions toward a dog, all of their dogs entered are DQ’d for the event and a report will be submitted to W3PO.
- The highest weight a dog pulls in the event is used to determine awards. Awards are awarded based on the highest weight OR the percentage weight (highest weight divided by body weight).

PULL, TWIST, & SHOUT!

PROCEDURE

- Teams will be called into the chute by the Judge.
- The dog's harness will be hooked to the cart (by handler or cart help). Dogs must have four feet on the ground before they are hooked to the cart.
- While holding onto the dog, the handler will position the dog between the cart's wheels and walk the dog out to extend the Trace line. There can be no slack in the trace line before releasing the dog. THE JUDGE WILL TELL YOU WHEN YOU ARE GOOD!
- When ready, the handler will release the dog and encourage the dog to pull.
- Time begins when the handler gives the first cue (verbal or signal) or the dog initiates forward movement.
- When the cart is pulled past the finish line, the Judge will call "PULL" and state the dog's time. After the Judge calls "PULL" the handler can touch their dog.
- The dog will be unhooked from the cart and exit the chute. The dog will rest (preferably crated) while the rest of the round is completed.
- If the dog earns a foul, the handler can elect to reset immediately or proceed to the end of that round's run order.

ADDITIONAL NOTES

- W3PO does not allow dogs to pull if the temperature in the chute exceeded 90°F. Judges will be monitoring the temperature at all times.
- Judges may require a dog to take a 5 minute break AT ANY TIME if needed.
- Rewards can be given to dogs in between rounds at the crating area - NO REWARDS IN THE CHUTE or ON DECK AREAS.
- Electric collars are not allowed at any time. Non-electric training tools (prong collar, slip chain, head halter) may be used to assist in walking dogs from the crating area to the chute. Only flat collars and martingale collars are allowed while a dog is pulling. Excessive corrections are grounds for disqualification at the judges discretion.
- If a handler is reported for any abusive/harsh treatment, that handler will be DQ'd from weight pull as well.

SCSD HOUSE RULES

- Handlers of dogs that eliminate on any equipment will be assessed a \$5 fee and expected to clean up after their dog.
- Judges, Volunteers, and Vendors who wish to compete with their dogs are encouraged to do so, and accommodations may be made as needed. When handling their dogs, they should be respected as a competitor and not disturbed until they are back in their judge/volunteer/vendor role.
- All competitors are expected to follow all W3PO, SCSD, and Venue rules. Depending on the situation, failure to follow the rules will result in a dismissal from the event.
- REACTIVE DOG POLICY:
 - SCSD strives to be accommodating to all teams who want to try this sport, which includes our ~spicy~ friends. If your dog is reactive, please discuss accommodations with the Chief Judge during weigh in.

PULL, TWIST, & SHOUT!

TITLES

To earn a title, a dog must earn THREE qualifying legs. One leg can be earned per competition at this event (two total). A qualifying leg is determined by the final weight pulled by the dog and the dog's body weight. Titles do not have to be earned sequentially. Dogs entered in NOVICE can only earn the WPA title. Dogs in OPEN can earn any title.

| Artificial Wheels Titles (Abrv.) | Qualifying Leg | A 50lbs dog would need a qualifying pull of: |
|------------------------------------------|-----------------|----------------------------------------------|
| Weight Pull Aptitude (WPA) | 5x body weight | 250 lbs |
| Weight Pull Dog Wheels (WPDW) | 12x body weight | 600 lbs |
| Weight Pull Dog Excellent Wheels (WPDxW) | 18x body weight | 900 lbs |
| Weight Pull Dog Superior Wheels (WPDSW) | 23x body weight | 1150 lbs |

AWARDS

Awards listed below will be award each day. All awards are while supplies last. In the event there are not enough awards, SCSD will make every effort to ship awards following the event in a timely manner.

| | | |
|--------------------------------------------|--------------------------------------------------------------------------------|-------------------------|
| Most Weight Pulled (MWP) | Award to the dog that pulls the most weight at that event. | TBD |
| Most Weight Pulled per Body Pound (MWPP) | Awarded to the dog that pulls the highest body pound percentage at that event. | TBD |
| Class Placements First - Second - Third | Awarded to the top three highest pulling dogs in each weight class. | Event Placement Ticket |
| Qualifying Pull - Title Leg | Awarded to a dog that completes a qualifying title leg. | Event Qualifying Ticket |
| New Title | Awarded to a dog that completes a title. | Rosette |

PULL, TWIST, & SHOUT!

FROM SCRUFFY CITY STRONG DOGS

We hope you will come try this awesome sport with us! Our members and officers will be there to support you and your dog throughout this event. What matters most to us is you and your dog having fun in a safe way.

Weight Pull is a low-impact sport. Weight Pull harnesses are designed to safely distribute the weight being pulled safely across the dog's body while avoiding pinching and pressure points. A proper weight pull harness is essential to safe pulling. SCSD has harnesses available for competitors to borrow and judges and/or members who will check to ensure a harness is properly fitted prior to a dog pulling.

SCSD does not condone forcing a dog down the chute that does not want to pull. Dogs cannot be dragged or bullied down the chute in any capacity at a competition (and SCSD does not permit it during training, either).

One of the reasons this sport is great for the handler-dog bond is because the human acts as a hype-man for their dogs. Handlers cannot touch or bait their dogs in competition, but they can cheer/call/encourage as much as they want! New dogs to the sport often think they can't pull much, but their human's job is to convince them they can! Dogs tend to make it abundantly clear when they are done pulling for the day. And because weight pull is a sport primarily focused on building confidence, it is common practice to always end on a 'successful' pull and praise - even if the dog is getting help by someone pushing the cart!